

ITEM	DESCRIPTION
1	RING
2	CLAMPING RING
3	WASHER
4	SPACER POST
5	RD HD SCREW

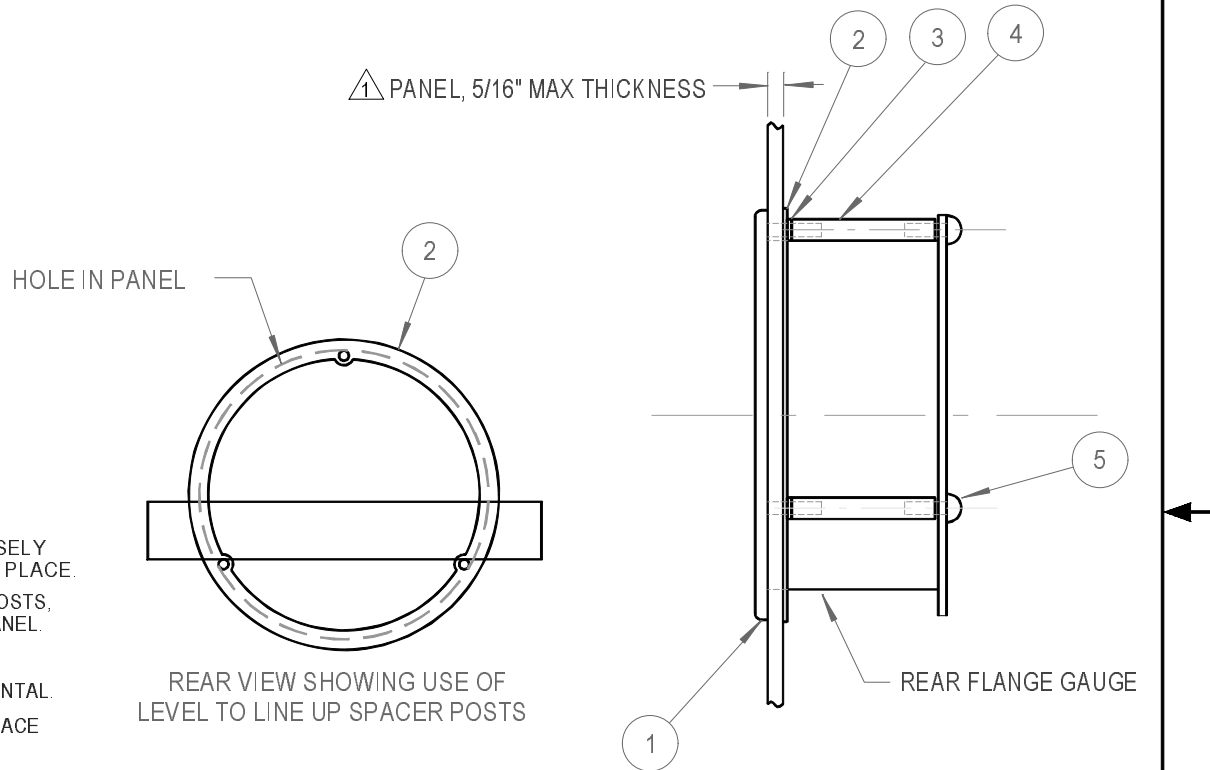
NOTES:

- 1. LENGTH OF SPACER POST BASED ON 5/16" MAX PANEL THICKNESS. FOR EACH 1/16" REDUCTION IN PANEL THICKNESS ADD ONE WASHER, ITEM 3, PER POST AS SHOWN IN ASSEMBLY.
- 2. FLUSH MOUNTING KIT P/N'S:
 3 1/2 GAUGE ... 1219907x5-35
 4 1/2 GAUGE ... 1219907x5-45
 8 1/2 GAUGE ... 1219907x5-85
 NOTE: x= COLOR CODE
- 3. REF DWG 80064-803-841569

INSTRUCTIONS FOR ASSMBLING RING IN PANEL:

1. APPLY RING FROM FRONT SIDE OF PANEL SO THAT WELD BOLTS ENTER PANEL HOLE.
2. WORKING FROM THE FRONT OF THE PANEL, PLACE CLAMPING RING (PC 2) ON THE WELD BOLTS AND LOOSELY ASSEMBLE TOP SPACER POST TO HOLD RING (PC. 1) IN PLACE.
3. FROM REAR OF PANEL, APPLY THE TWO LOWER SPACER POSTS, JUST LOOSE ENOUGH TO PERMIT ROTATION OF RING IN PANEL.
4. LAY A LEVEL ACROSS THE TWO LOWER SPACER POSTS.
5. ROTATE RING AS NECESSARY TO BRING POSTS TO HORIZONTAL.
6. TIGHTEN ALL SPACER POSTS. VERIFY THAT THE FULL SURFACE OF THE CLAMPING RING IS IN CONTACT WITH THE PANEL.

REVISIONS			
REV	DESCRIPTION	DATE	APPROVED



UNLESS OTHERWISE SPECIFIED DIMENSIONS ARE IN INCHES	MATERIAL: SEE NOTE 2	CONTRACT NO.		PERMA-CAL INDUSTRIES, INC.			
		PREP BY	AMJ				
ANGULAR ± 1°	FINISH: POWDER COATED	CHECK		FLUSH MOUNTING INSTRUCTIONS FOR REAR FLANGE ALUMINUM GAUGES			
LINEAR .XX ± .030 .XXX ± .015		PROJ ENGR	REH				
FRACTIONAL ± 1/16		USED ON: ALUMINUM RF GAUGES	FILE NAME: MIL-G FMI	SIZE A	CODE IDENT NO. 59018	DRAWING NO. MIL-G FMI	REV N/C
DIAMETERS ON SAME C/L RUNOUT WITHIN .016 FIR			SCALE	WEIGHT	SHEET 1 OF 1		
✓ SURFACE ROUGHNESS USAS B46.1							